

THE ANNA-MARIA and STEPHEN KELLEN CENTER FOR TRANSDISCIPLINARY LEARNING
THE MANHATTAN CHILDRENS CENTER

CAMPUS EXPANSION

CAPITAL CAMPAIGN



A BLUEPRINT FOR GROWTH

DELIVERING ON OUR PROMISES



THE MANHATTAN CHILDRENS CENTER

MCC provides world class one to one treatment and education to children with autism spectrum disorder (ASD), ages 5 to 21, utilizing the principles of Applied Behavior Analysis (ABA).

Each child is given the skills and support to enjoy an improved quality of life and emerge as a functioning member of society. **MCC** provides individualized instruction and demonstrable results. Our students grow and achieve.

MCC's transdisciplinary model incorporates ABA, speech and occupational therapy, sensory integration, natural environment training, and family support. This unique individualized approach achieves results. **MCC** delivers on its promises.

STRATEGIC VISION

MCC WILL UTILIZE THE NEW SPACE TO BRING ABOUT REAL CHANGE AND OFFER OLDER LEARNERS AN OPPORTUNITY TO CONNECT, INTERACT AND ACHIEVE



DEMONSTRABLE OUTCOMES

MCC operates two locations on Manhattan's Upper West Side, at 111 West 92nd Street and at 124 West 95th Street that were designed and planned for students ages 5 to 15. Within our educational planning was a specific space best suited for our older learners. After almost three years of pandemic pause, we are ready to continue on this road to bring about real change and demonstrate results. Our goal is to help young people with autism achieve independence.

The campus expansion, located at 715 Columbus Avenue, will include custom classroom designs with modifiable walls to accommodate various student activities and groupings. The new and innovative design will include Snoezelen Multi-Sensory Environments and **MCC's** new **Bear's Boomin' Bakery**.

THE PLAN: BEAR'S BOOMIN' BAKERY

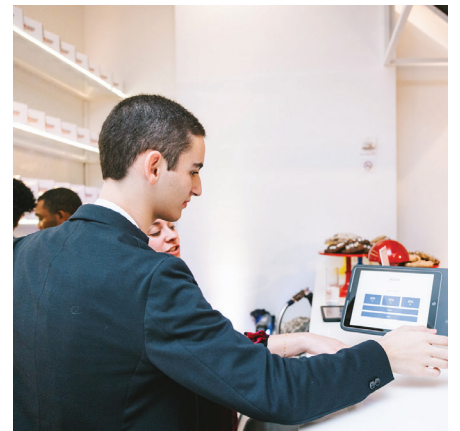
DOING WHAT WE DO BEST: FILLING A NEED WHEN NO ONE ELSE WOULD
& DELIVERING ON OUR PROMISES



THE MCC BEAR'S BOOMIN' BAKERY

It is extremely difficult to find appropriate job training sites for our older learners. **MCC** decided to create it ourselves. **MCC's Bear's Boomin' Bakery** will provide a tailored learning environment created and managed by our Educational Team, to enable our older learners to engage in and practice real-world employment and self-management skills—the skills necessary for independent living opportunities upon graduation.

The Bear's Boomin' Bakery will allow our students to synthesize various vocational skills into a real-world work environment. The bakery will provide a range of internship opportunities for students of all abilities.



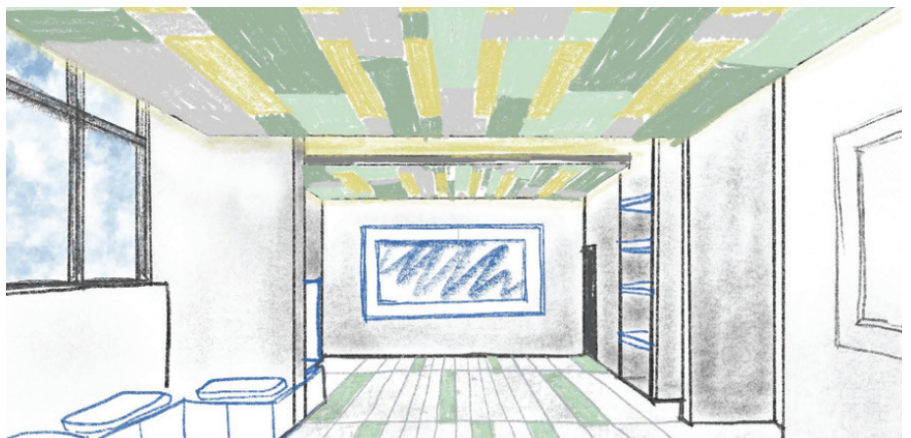
THE PLAN: LIFE'S SKILLS ROOM

DOING WHAT WE DO BEST: FILLING A NEED WHEN NO ONE ELSE WOULD
& DELIVERING ON OUR PROMISES



THE LIFE SKILLS ROOM

The Life Skills Room will replicate a functional apartment to give our students the opportunity to practice a variety of skills, including household, self-care, kitchen, and leisure skills. They will be able to generalize previously learned skills in a naturalistic environment, as well as practice transitioning into the community.



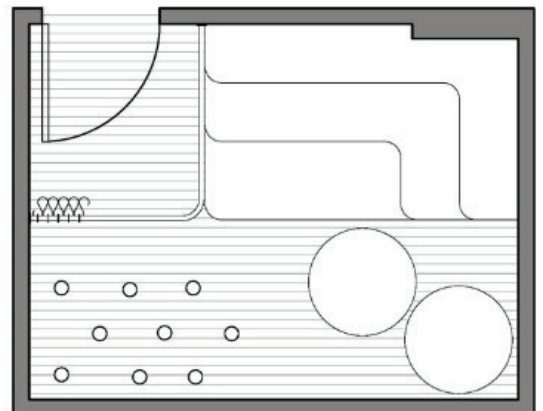
THE PLAN: SNOEZLEN ROOMS

DOING WHAT WE DO BEST: FILLING A NEED WHEN NO ONE ELSE WOULD
& DELIVERING ON OUR PROMISES



THE SNOEZELN ROOMS

Snoezelen Multi-Sensory environments help calm and reduce agitation through the use of gentle light, soothing sound, relaxing smells and textures. It aids in relaxation, stimulation, development and therapy.



INVEST WITH MCC

MAKE AN IMPACT: BRING ABOUT REAL CHANGE IN THE LIVES OF OUR YOUNG ADULTS AND THEIR FAMILIES



MCC is pleased to announce that we have partnered with New York's iconic Lefrak Organization for space to house our new campus at 715 Columbus Avenue. To build out this space, we are raising \$4,000,000. MCC's friends, supporters and families have already raised \$3,148,800 in pledges and investments in this campaign. We are counting on you to help us raise the additional \$851,200 required.

DETAILED OUTLINE OF USE OF FUNDS:

\$2,500,000 – Architectural Planning and Construction

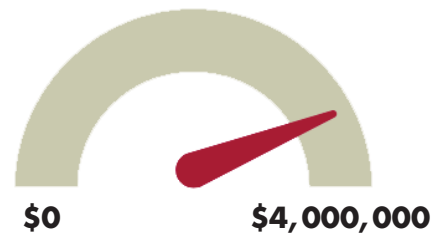
\$350,000 – IT, Telecom, and Security

\$300,000 – Furniture and Classroom Equipment

\$300,000 – Bear's Boomin' Bakery

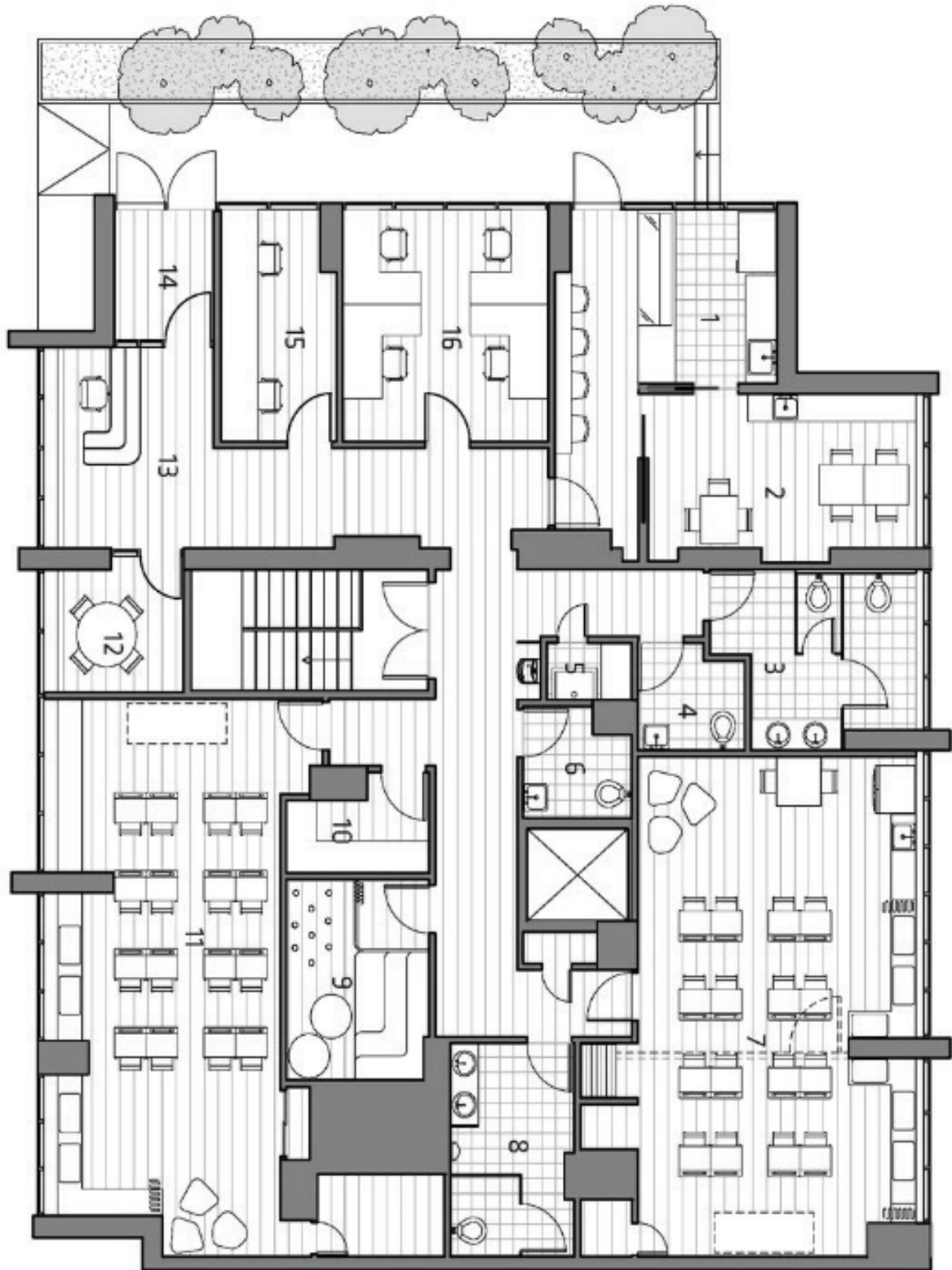
\$550,000 – Ancillary Costs

\$3,148,800



If you want to make an impact and improve the lives of our young adults with ASD, make an investment in the future and help us raise the additional \$851,200 required to complete this project. Become a co-architect of **MCC's** success and make the dreams for the future of our students and their families a reality.

A BLUEPRINT FOR GROWTH



A BLUEPRINT FOR GROWTH



A BLUEPRINT FOR GROWTH

SUPPORT AND INVEST IN MCC

MAKE YOUR TAX DEDUCTIBLE GIFT TO THE MCC FOUNDATION



THE MCC FOUNDATION

The MCC Foundation, Inc is a 501(c)(3) charitable organization dedicated to supporting the Manhattan Childrens Center (**MCC**).

The Foundation develops, maintains and enhances **MCC's** culture of giving and supports the growth of the school's endowment to ensure that **MCC** remains sustainable for years to come. Help **MCC** achieve its strategic goals by supporting The **MCC Foundation**, Inc with your tax deductible investment in real change for real people.

A BLUEPRINT FOR GROWTH

WAYS TO SUPPORT AND INVEST IN MCC

MAKE AN IMPACT: BRING ABOUT REAL CHANGE IN THE LIVES OF OUR YOUNG ADULTS AND THEIR FAMILIES



Scan code or visit this link to invest in the MCC Campus Expansion Capital Campaign:

<https://www.rayze.it/mcccpcampaign/>

Please make checks payable to:
MCC Foundation, Inc.

Mail to:
Manhattan Childrens Center
ATTN: Ellaine Day
111 W 92nd Street
New York, NY 10025



A BLUEPRINT FOR GROWTH

THE MCC BUILDS HOPE SOIRÉE

A GALA TO BENEFIT MCC'S CAMPUS EXPANSION CAPITAL CAMPAIGN



**If you need information regarding Development and Fundraising at MCC,
please contact Ellaine Day, Development Coordinator, at 212-749-4604, ext. 347,
or eday@manhattanchildrenscenter.org**



**124 W 95TH STREET
NEW YORK, NY 10025**

**111 W 92ND STREET
NEW YORK, NY 10025
212.749.4604**

**715 COLUMBUS AVE
NEW YORK, NY 10025**